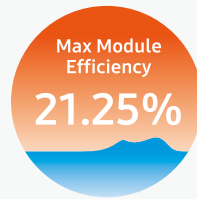
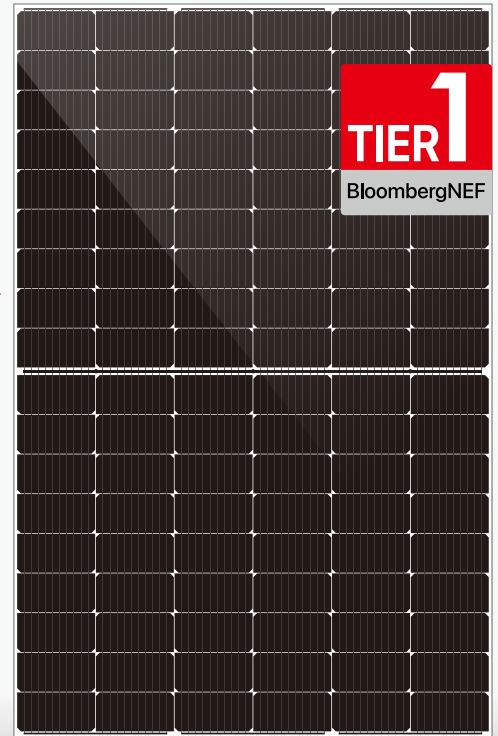


DHM-54X10

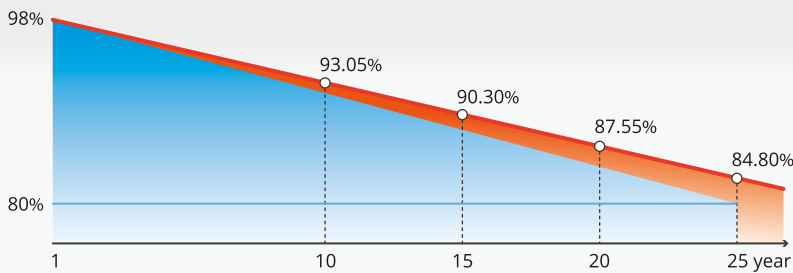
400~415 W

Half-Cell High Efficiency PV Module



Quality Guarantee

12-Year material & technology warranty
25-Year linear power output warranty



DAH Solar linear power output guarantee
 Standard linear power output guarantee

More Power Generation
 Larger size of light receiving area and higher module conversion efficiency

10 Busbar Technology
 Higher power collection density improves power generation

Stable Generation Performance
 Guaranteed 0~+5W positive tolerance and slower power attenuation:
 first year ≤2%, 0.55% per year from 2-25

Higher Power Gains and Lower Losses
 Excellent low irradiance performance and low shadow loss

Process Optimized and Upgraded
 Lower risk of hot spot and stronger anti-PID ability

Strong Environmental Adaptability and Great Durability
 Certified by Dust-Sand, Salt-Mist, Ammonia etc. weather resistance tests and enhanced mechanical load: wind load (2400 Pa) and snow load (5400 Pa)

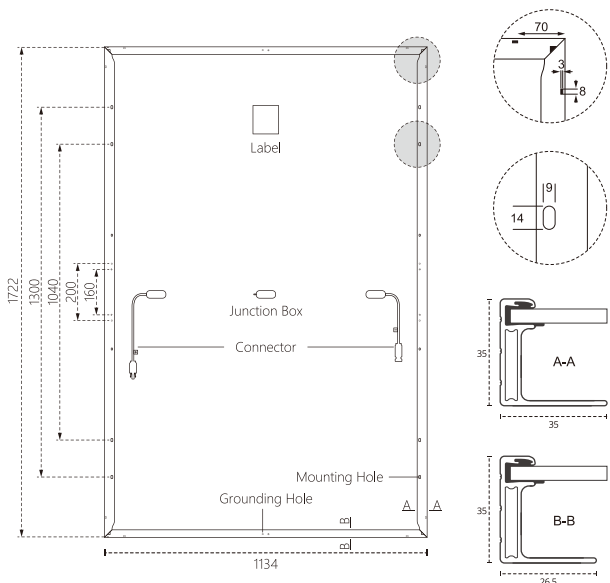
Comprehensive Products and System Certificates



IEC 61215 / IEC 61730 / CE / FIDE / INMETRO
 ISO 45001-
 2018/International standards for occupational health & safety
 ISO 14001-
 2015/Standards for environmental management system
 ISO 9001-
 2015/Quality management system

DHM-54X10-400~415W

Design



Mechanical Specification

Cells Type
Mono 182×91mm

Weight
22kg

Output Cable
(Including connector)
No. of Cells
Glass
Junction box
Connector

Dimension (L×W×T)
1722×1134×35mm

Packing
31pcs/pallet, 806pcs/40HQ

4.0mm², 350/250mm in length,
length can be customized
108 (6×18)
3.2mm High Transmission, Antireflection Coating
IP68, 3 Bypass Diodes
MC4 Compatible

Operating Parameters

Maximum system voltage	1500V DC
Operating Temperature	-40 ~ +85°C
Maximum series fuse rating	25A
Snow load, frontside	5400Pa
Wind load, backside	2400Pa
Nominal operating cell temperature	45°C±2°C
Application level	Class A

STC-Electrical Characteristics

Module Type	DHM-54X10			
Maximum Power (Pmax/W)	400	405	410	415
Open-circuit Voltage (Voc/V)	36.8	37.0	37.2	37.4
Maximum Power Voltage (Vmp/V)	31.3	31.5	31.7	31.9
Short-circuit Current (Isc/A)	13.48	13.54	13.60	13.66
Maximum Power Current (Imp/A)	12.77	12.85	12.92	13.00
Module Efficiency (%)	20.48	20.74	21.00	21.25
Temperature Coefficient of Isc			0.05%/°C	
Temperature Coefficient of Voc			-0.31%/°C	
Temperature Coefficient of Pmax			-0.35%/°C	

Standard Test Environment : Irradiance 1000W/m², Cell temperature 25°C, Spectrum AM1.5

NOCT-Electrical Characteristics

Maximum Power (Pmax/W)	298	301	305	309
Open-circuit Voltage (Voc/V)	34.5	34.7	34.9	35.1
Maximum Power Voltage (Vmp/V)	29.4	29.6	29.8	29.9
Short-circuit Current (Isc/A)	10.89	10.94	10.99	11.04
Maximum Power Current (Imp/A)	10.13	10.19	10.25	10.31

Standard Test Environment : Irradiance 800W/m², Ambient temperature 20°C, Spectrum AM1.5, Wind speed 1m/s

I-V Curve DHM-54X10-410W

